



WEEKLY E-NEWSLETTER

INFORMATION FOR
SEPTEMBER 30 - OCTOBER 9, 2022

UPCOMING EVENTS

See what's happening this [month](#).

NASIS PARENT/STUDENT PORTAL

[Access](#) assignments, grades and more.

PARTNERSHIP FOR STUDENT SUCCESS HANDBOOK

Discover what's new in the [handbook](#).

SFIS DAILY BULLETIN

Stay in the [know](#).

COVID MITIGATION CENTER

View mitigation [information](#) and updates

Community Links

[SFIS Website](#)

[Library Media Center](#)

[2022-23 School Calendar](#)

[School Forms/Contracts](#)

[Student Fee & Other
Payments](#)



Santa Fe Indian School

2022 - 2023

BELL SCHEDULE

ODD/EVEN MONDAY - THURSDAY SCHEDULE

Brave Connections	8:05 am - 8:35 am
1st/2nd period	8:40 am - 10:05 am
3rd/4th period	10:10 am - 11:35 am
Mid School Lunch	11:35 am - 11:55 am
9/10 grade Lunch	11:55 am - 12:10 pm
11/12 grade Lunch	12:10 pm - 12:25 pm
5th/6th period	12:30 pm - 1:55 pm
7th/8th period	2:00 pm - 3:25 pm

ODD/EVEN FRIDAY SCHEDULE

1st/2nd period	8:05 am - 9:20 am
3rd/4th period	9:25 am - 10:35 am
5th/6th period	10:40 am - 11:50 am
Mid School Lunch	11:50 am - 12:10 pm
9/10 grade Lunch	12:10 pm - 12:25 pm
11/12 grade Lunch	12:25 pm - 12:40 pm
7th/8th period	12:45 pm - 1:55 pm
Health & Wellness	2:00 pm - 3:25 pm

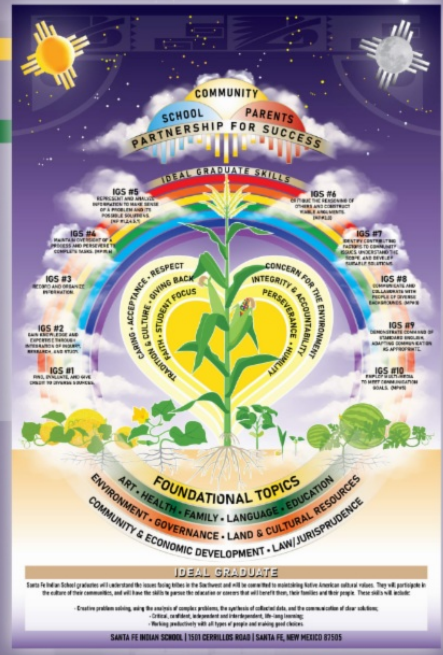
IMPORTANT TELEPHONE NUMBERS	High School Academics	Middle School Academics	Campus Resources
	HS Front Office (505) 989-6330	MS Front Office (505) 989-6393	Information Technology (888) 966-8557 helpdesk@sfnk12.nm.us
	HS Dean of Students (505) 216-7403	MS Dean of Students and Attendance (505) 216-7413	Admissions (505) 989-6370 admissions@sfnk12.nm.us
	HS Attendance (505) 989-6327	MS Academic Counselor (505) 989-6328	Security on Duty (505) 690-4380

DON'T FORGET TO CHECK YOUR EMAIL

Student Assistance Grid



ALSO AVAILABLE ON GOOGLE DRIVE



Gwilym Johnson, 12th grade student intern, created the attached wallpaper for student Chromebooks. The wallpaper serves as a reference for students and staff which contains the bell schedule, important phone numbers, a student assistance grid, and the beautiful SFIS Curriculum Visual created by William Pacheco. Gwilym's design was inspired by the curriculum visual and the sacred colors in the SFIS logo. He is a very talented graphic designer and an amazing intern eager to learn and craft his gift.

Week At-A Glance

TODAY, Friday, 9/30
 Taos Pueblo Feast Day
 Odd Schedule
 Transportation Count Week (9/26 - 9/30)
 Residential Count Weeks (9/25-10/15)
 Braves Football vs Espanola
 Lady Braves Soccer @ Santa Fe Prep

Saturday, 10/1
 Residential Count Weeks (9/25-10/15)
 John Grimley SFIS Memorial X-Country Invite
 Lady Braves Volleyball vs Raton

Sunday, 10/2
 Residential Count Weeks (9/25-10/15)

Monday, 10/3
 Residential Count Weeks (9/25-10/15)
 Golf at Espanola Valley Open
 MS Lady Braves Volleyball @ Los Alamos

Tuesday 10/4
 Nambe Pueblo Feast Day
 Residential Count Weeks (9/25-10/15)
 Lady Braves Volleyball vs St Mikes

Wednesday, 10/5
 Residential Count Weeks (9/25-10/15)
 Brave Graduate Session
 MS Braves Football @ Los Alamos

Thursday, 10/6
 Residential Count Weeks (9/25-10/15)
 Lady Braves Soccer vs Santa Fe Prep
 Lady Braves Volleyball vs West Las Vegas

Friday, 10/7
 Residential Count Weeks (9/25-10/15)
 Scheduled Student, Parent, & Teacher Conferences: 8-4 (No Classes)

Saturday, 10/8
 Residential Count Weeks (9/25-10/15)
 Lady Braves Soccer @ West Las Vegas

Sunday, 10/9

KINDNESS IS FREE
SPRINKLE
THAT STUFF
EVERYWHERE



Office of Admissions Information

**2022-2023 REGISTRATION
FOR ALL SFIS STUDENTS CLOSES
FRIDAY, SEPTEMBER 30TH**

All current SFIS Students need a completed school registration by deadline.

[Visit our Website](#)

Office of the Superintendent Information



SANTA FE INDIAN SCHOOL

Office of the Superintendent

1501 Cerrillos Road

Post Office Box 5340

Santa Fe, New Mexico 87502

Phone: (505) 989-6318

September 30, 2022

Good Morning Parents,

I am writing this letter to update you on Santa Fe Indian School's (SFIS) COVID-positive cases this month. In the month of September our COVID-positive case numbers are at a total of 56 staff and students. We have a total school population, including staff and students, of 966 so these numbers represent 5.8% of the school. There are no hospitalizations due to COVID because we are 98% vaccinated.

Our response has been swift and necessary to stop the spread. As of Monday, we returned to mandatory indoor masking and, on Tuesday, moved to Phase 3 for Extracurricular Activities and Sporting Events. We continue to reiterate our more restrictive COVID Safe Practices by encouraging students and staff to keep a distance of 6 feet apart, frequent hand washing, and not to share food or drinks.

Moving forward, we will continue the COVID vaccination mandate for students and staff. This means that we will require that everyone receive the new COVID bivalent booster - we will be sending details next week. If your student is eligible for the bivalent booster and has not received it, Santa Fe IHS is offering a bivalent booster clinic tomorrow, October 1, 2022 from 9am-2pm. This clinic is by appointment only: please call (505) 946-9282 or (505) 946-9203 to schedule an appointment.

Santa Fe Indian School's COVID Mitigation Plan is on the SFIS website in the [COVID-19 Mitigation Center](#) and has been hailed as one of the most comprehensive approaches to COVID mitigation by other school districts and the New Mexico Department of Health (NMDOH). We knew that there would be times throughout the year when we would see the virus move upward and downward, just as we see in our communities, and our Mitigation Plan takes this into account. For this reason, we were able to quickly identify the uptick in cases and take steps to reduce further transmission.

With love for our children,

Christie L. Abeyta
Superintendent

NASIS Information

Did you know that you can download a free NASIS app to your phone or device?







It's easy and you only have to logon to NASIS once. After that, you can access it anytime you want just by opening the app. It's a great way to keep up-to-date on student grades and assignments.

Step 1. Search for "Infinite Campus" in the apple app store, google play, or in the amazon app store. The first time that you log in to the app,

Campus Mobile Portal for Parents and Students

Parents and students can now access their Campus Portal information on Android and iOS devices using the Campus Mobile Portal app.



-  **Daily Planner**
View today's schedule and assignments due for each class.
-  **Assignments**
Browse your assignments by specific class or due date.
-  **Attendance**
Review attendance events in summary and detail form.
-  **Grades**
Know your grades now. Forget about end-of-term report cards to know how you're doing.
-  **Schedule**
Check your schedule from anywhere, at any time.
-  **Food Service**
Check your account balance. Available in districts using Campus Food Service.

Where to Download the Campus Mobile Portal App

The Campus Mobile Portal can be downloaded through the Apple App Store, Google Play Store or Amazon Appstore.



you'll need enter the SFIS District ID: YGJXDS

Step 2. Enter your username and password you use on the NASIS portal.

If you need help with your NASIS username or password, contact William Pacheco at 505-989-6308.

Student Rights & Responsibility Information

Cell Phone Policy Reminder

Dear SFIS Parents/Guardians,

The SFIS Partnership for Success Handbook ([click here to access the handbook](#)) shares the important expectations of the school. Please read the cell phone policies below and speak with your child about these expectations:

Cell Phone and Electronic Device Use

Mobile devices, including but not limited to cell phones, smart watches, and iPads, cannot be used by students during class, assemblies, presentations and other formal gatherings. Students are provided appropriate technology for educational purposes that can be used at the teachers' direction in the classrooms. Electronic/Mobile devices will be confiscated if they are being used in opposition to classroom or school rules and turned over to the HS/MS Dean of Students. Headphones are not to be worn in the ear and on the body during class, assemblies, presentations and other formal gatherings. High School residential students cannot use these devices after lights out in the dormitory. Middle School residential students cannot take their phones to evening program structured activities and are required to turn in their cell phone and charger before 8:30 pm. Weekend MS dorm students may use their phones beginning Friday afterschool and may use it throughout the weekend until 4:00 PM on Sunday.

Violation of Cell Phone Policy

Personal mobile devices will be confiscated for violating any of the guidelines set above. *This policy serves as a first warning to students and parents.* Therefore, the first time an electronic device is taken, it will be confiscated until the end of the school week at which time the student can sign it out. The second time an electronic device is confiscated, it will be held for 7 days and the student can sign it out. The third time an electronic device is confiscated, or if a student refuses to turn over his/her device, a student will be written up for insubordination and a family conference will be held.

During the academic day, devices will be confiscated and held in the Academic Office. During the evening, devices used contrary to school rules will be confiscated and held by their student living advisor. Devices will be returned according to policy as determined by the school. A student's cell phone may be confiscated and searched if there is reasonable suspicion that illegal or dangerous activity is occurring and to protect the health and safety of students and school staff. Designated staff have permission to view phones as per policy. Loss/Damage of Personal Electronics and Mobile Devices SFIS provides sufficient technology for students to complete their work in both academic and residential programs. Therefore, SFIS advises students not to bring personal laptop computers or other mobile devices on campus. SFIS is not responsible for loss, damage, or theft of these items.

Immunization Information



**SAVE THE DATE
GET UP TO DATE**

**Immunization deadline
October 21, 2022**

The graphic features a light green background with several black virus-like icons on the left. On the right, there is a blue hand holding a syringe, and below it, a blue vial and a blue pipette.

Homecoming 2022



Congratulation

2022

Santa Fe Indian School

Homecoming Court

Homecoming King

Preston Chavarria, Santa Clara Pueblo

Homecoming Queen

Shade-Phea Young, Navajo, Ohkay Owingeh and Hopi

11th Grade Prince

Javen Garcia, Ohkay Owingeh



11th Grade Princess

Ali Ortiz, Santa Clara Pueblo



10th Grade Prince

Jonathan Vigil, Pueblos of Santa Clara and Tesuque

10th Grade Princess

Asia Gabaldon, Ohkay Owingeh and Zuni

9th Grade Prince

Abel Herrera, Cochiti Pueblo

9th Grade Princess

Pearletta Calvert, Ohkay Owingeh



FAFSA Family Night

A Live Walkthrough with Q&A

**Wednesday
10/5/2022**

6:30pm - 7:30pm

Students:
**In Person Humanities
Common Room 1**

Parents/Guardians:
Live Stream on Zoom



WITH



Student & Parents/Guardians strongly encouraged to attend together

WHAT TO BRING

- Chromebooks
- Birthdays
- FSA ID for both Student and Parent
- 2021 Taxes (parent/guardian & student, if applicable)
- 2021 W-2's (parent/guardian & student, if applicable)
- Social Security Number for student and parent
- List of Schools that student is considering
- Parent(s) marriage status and dates. If divorced, the month and year.



For more info please contact:

**Howard Humetewa
21st Century Coordinator
HAHumetewa@sfis.k12.nm.us**

[Join Here](#)

Athletics Information



WE ARE LOOKING FOR PARENT VOLUNTEERS!

**THE ATHLETIC DEPARTMENT IS
LOOKING FOR PARENT VOLUNTEERS
TO HELP MAN THE CHAINS FOR
HOME FOOTBALL GAMES.**

**FOR MORE INFORMATION, CONTACT
NATHAN ABEYTA AT 505-231-8693 OR
VIA EMAIL AT NABEYTA@SFIS.K12.NM.US.**



10TH ANNUAL JOHN GRIMLEY MEMORIAL CROSS COUNTRY MEET



CALLING ALL SFIS ALUMNI

OCTOBER 1, 2022

8 AM - 12 PM

We need help with various areas such as parking, course spotters, finish line helpers, and cleanup.

All Runnin Braves Alumni will be recognized at this event

Interested in helping? Contact:

AD Brock @ 505-989-6350 or ebrock@sfis.k12.nm.us

Nathan Abeyta @ 505-231-8693 or nabeyta@sfis.k12.nm.us

Community Information

Attention San Felipe Students

Services begin Monday, September 26th from at the San Felipe Education Department for San Felipe students in grades K-12.

IN-PERSON HOMEWORK HELP!

MUST SIGN UP TO BEGIN SERVICES

- **Starts:** Monday, September 26, 2022
- **Where:** San Felipe Education Department
- **Who's eligible?** All K-12th grade San Felipe Students

SIGN UP HERE! →

SCAN ME



All students who sign-up for homework help can be dropped off at the building each day Monday-Thursday from 3:30 PM-6 PM and Friday 3:30 PM-5 PM for help with their homework.



**PLEASE CALL OUR DEPARTMENT AT 505-771-9970
FOR MORE INFORMATION.**



MINI Arts & Craft SHOW

Saturday, October 1, 2022

9am-4pm

**(The sales area will be at the Pueblo de San
Ildefonso Administration Building)**

For further information, please contact Denise Moquino @ 692-5580

This event will feature
San Ildefonso Pueblo Artists





SANTA FE INDIAN SCHOOL | <http://www.sfis.k12.nm.us>



Santa Fe Indian School | 1501 Cerrillos Rd., Santa Fe, NM 87505

[Unsubscribe krshije@sfis.k12.nm.us](mailto:krshije@sfis.k12.nm.us)

[Update Profile](#) | [Constant Contact Data Notice](#)

Sent bysfis_newsletter@sfisonline.orgin collaboration
with



Try email marketing for free today!